



ANNUAL PERFORMANCE REPORT 2015-16

Dear Parents and Community Members:

We are pleased to share our 2015-16 Puyallup School District Performance Report with you. In this report you will find basic information about our schools, programs and student performance. We continue to strive to meet federal and state standards, as well as meet our district mission of preparing each child for a meaningful post-secondary opportunity. We continue to see improvement over time in our district and are pleased with the partnerships we have created to help our students pursue education after high school. Information and data contained in this report allow us to assess our strengths, as well as identify areas where improvements can be made. The information included provides our focus and supports the district's strategic plan, improvement plan and school board/superintendent goals and expectations.

Puyallup Public Schools are an integral part of the Edgewood, Puyallup and South Hill communities. We appreciate the trust and support that our community provides. Plans, direction and actions within the school district reflect community and parental input and involvement, along with great tradition and pride in our students, schools and facilities. We will continue to design quality student educational experiences that provide opportunities and challenges for student learning relevant and applicable to our changing world.

We hope you find this summary overview useful and informative. We are committed to continued communication and collaboration with our Puyallup School District Stakeholders.

Sincerely,

Dr. Timothy S. Yeomans
Superintendent

Our Mission

The Puyallup School District, in partnership with our diverse communities, educates and inspires students to reach their full potential.

Our Vision

Puyallup School District students will be:

- Skilled in successfully applying knowledge in all required subjects.
- Competent as critical and innovative thinkers able to analyze and solve complex problems.
- Engaged as life-long learners pursuing their goals and dreams.
- Successful as communicators and collaborators.
- Proficient in demonstrating an understanding of and a respect for individual differences.
- Prepared to transition to post-high school opportunities and be able to compete locally and globally.
- Skilled in making life choices that are healthy and socially responsible.
- Motivated to strive for excellence.

Our Beliefs

In partnership with our communities, we:

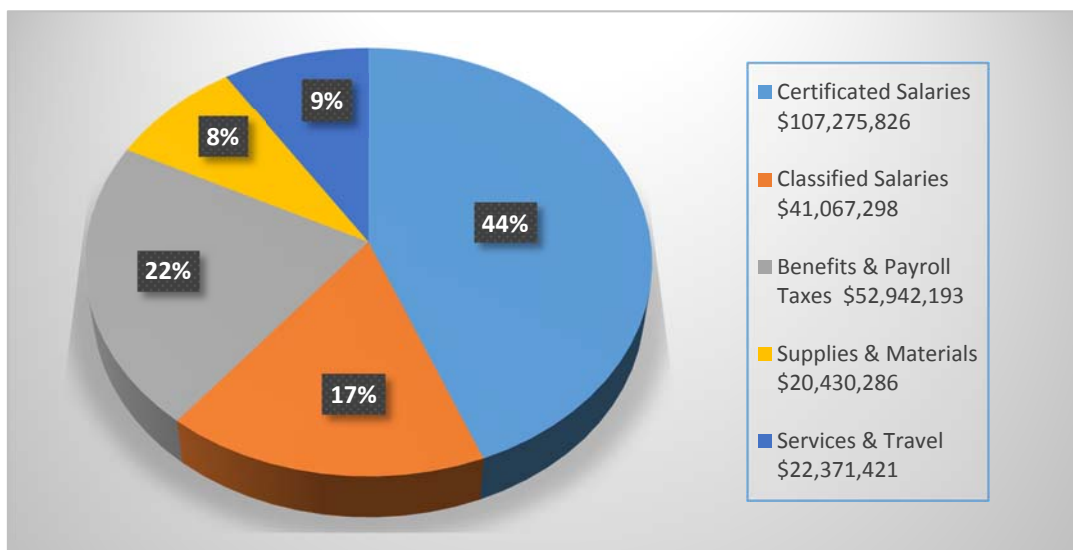
- Treat each student as a unique learner.
- Ensure all students have equal opportunities for learning and are supported in achieving competency in required subject and performance areas.
- Regularly assess, evaluate, and communicate to students, families, and the community the results of student performance.
- Engage parents/guardians, family members, guardians, and students as active partners in the educational process.
- Incorporate concepts of diversity that benefit all and are integral in all district endeavors.
- Communicate effectively with parents/guardians, students, staff, and members of the community.
- Cultivate and maintain partnerships that support district goals.
- Provide students and staff a safe and supportive learning and working environment.
- Demonstrate accountability to all stakeholders.

DISTRICT BUDGET INFORMATION

2015-2016 Per Pupil Amount (Excludes Running Start)

Head Count Enrollment - \$10,971.68

FTE Enrollment - \$11,281.12



On April 24, 2014, Washington became the first state to lose its waiver from Title I, Part A, of the Elementary and Secondary Education Act (ESEA) of 1965, reauthorized as the No Child Left Behind Act of 2001. As a result, schools and districts that did not make ‘Adequate Yearly Progress’ are considered to be in steps of improvement. Puyallup has eighteen schools that currently that are in steps of improvement:

- | | |
|---------------------------|------------------------|
| Emerald Ridge High School | Brouillet Elementary |
| Puyallup High School | Carson Elementary |
| Rogers High School | Firgrove Elementary |
| Aylen Jr. High | Hunt Elementary |
| Ballou Jr. High | Karshner Elementart |
| Edgemont Jr. High | Meeker Elementary |
| Ferrucci Jr. High | Shaw Road Elementary |
| Kalles Jr. High | Sunrise Elementary |
| Glacier View Jr. High | Waller Road Elementary |
| Stahl Jr. High | Zeiger Elementary |

Because the law requires that 100% of students must meet standard, it is predicted that most, if not all, schools will be in a step of improvement by 2017.

The Puyallup School District is considered to be in Step 2 of improvement due to the fact that not all students have met standard. The district is developing an improvement plan to address strategies to help schools better meet the needs of each student.

Achievement Data *

Year	Grade	Reading		Math		Writing		Science		ELA SBA		Math SBA	
		PSD	State	PSD	State	PSD	State	PSD	State	PSD	State	PSD	State
2012-2013	3rd	78.0	73.0	67.6	65.2								
	4th	77.7	72.5	64.3	62.5	63.6	62.1						
	5th	77.8	72.7	67.9	62.6			74.7	66.6				
	6th	79.5	71.5	73.7	59.3								
	7th	73.3	68.7	67.5	63.8	75.7	71.0						
	8th	66.9	66.3	60.8	53.3			73.1	64.8				
	10th	89.7	83.6	EOC BELOW		91.1	84.9	EOC BELOW					
2013-2014	3rd	80.0	72.0	82.8	63.0								
	4th	68.5	70.0	54.5	60.8	43.3	62.1						
	5th	61.1	72.4	54.6	63.5			75.0	66.8				
	6th	72.7	72.7	63.9	63.6								
	7th		67.7		57.8		71.1						
	8th		71.6		55.9			66.7	67.2				
	10th	88.6	82.9	EOC BELOW		90.5	85.6	EOC BELOW					
2014-2015	3rd									47.4	52.1	49.7	56.7
	4th									55.2	54.6	56.9	54.0
	5th							69.1	63.4	58.9	57.6	49.2	48.1
	6th									56.5	54.0	48.1	45.5
	7th									59.7	56.9	47.1	48.0
	8th							65.5	60.7	55.4	56.9	42.2	46.1
	10th												
	11th									16.9	26.3	10.9	13.7

Year	Grade	EOC 1 - Math		EOC 2 - Math		EOC - Biology	
		PSD	State	PSD	State	PSD	State
2012-13	10th	77.7	75.9	84.9	83.3	<30%	71.5
2013-14	10th	78.9	79.5	78.4	79.2	84.4	77.7
2014-15	10th					76.0	72.5

Parents’ Right to Know

Parents have the right to request information on the professional qualifications of their child’s teacher. The following information is available on request:

- Certification endorsement for grade level and subject
- Emergency or provisional status
- B.A. major and undergraduate degrees
- Paraprofessional qualifications

Parents will be notified if their child has a teacher for four weeks who does not meet the definition of “highly qualified” provided by the Office of the Superintendent of Public Instruction.

Parents Also Have the Right

Parents also have the right to inspect, upon request:

- Any survey created by a third party before the survey is administered or distributed by a school to students.
- Any instructional material used as part of the educational curriculum for students if used in connection with a Department of Education funded survey.
- Any survey tool used to collect information.
- The administration of physical examinations or screenings that the school may administer to students.
- The collection, disclosure or use of personal information collected from students for the purpose of marketing or selling.

The National Assessment of Educational Progress (NAEP) is commonly called the nations report card. NAEP is the only test in the United States that allows comparisons of the performance of students in Washington State with performance of students nationally. The following Puyallup schools participated in NAEP for the 2014-15 school Year:

Aylen JH Ballou JH Ferrucci JH Stahl JH
Edgerton Karshner Spinning Zeiger

For more information on NAPE go to <http://www.k12.wa.us/assessment/NAEP/reports.aspx>

STUDENT DEMOGRAPHICS

Ethnicity		Hispanic / Latino of any race(s)	American Indian / Alaskan Native	Asian	Black / African American	Native Hawaiian / Other Pacific Islander	White	Two or More Races
PSD	Count	3,280	191	1,017	775	282	13,575	2,520
	%	15.2%	0.9%	4.7%	3.6%	1.3%	62.7%	11.6%
STATE	Count	233,616	16,221	77,421	48,248	10,680	612,625	76,274
	%	21.7%	1.5%	7.2%	4.5%	1.0%	57.0%	7.1%

Special Programs		Free or Reduced – Price Meals	Special Education	Transitional Bilingual
PSD	Count	7,686	2,782	740
	%	35.3%	12.8%	3.4%
STATE	Count	482,024	143,304	111,325
	%	45.0%	13.4%	10.4%

GRADUATION AND DROP OUT DATA

YEAR		Graduation Rate 4-Year Cohort	Graduation Rate 5-Year Cohort	Dropout Rate 4-Year Cohort	Dropout Rate 5-Year Cohort
Class of 2011	PSD	84.3	85.3	11.0	12.8
	STATE	76.6	78.9	13.9	18.0
Class of 2012	PSD	80.1	84.2	13.5	14.5
	STATE	77.2	78.8	13.6	17.8
Class of 2013	PSD	83.7	87.3	12.9	10.9
	STATE	76.0	79.9	13.0	16.2
Class of 2014	PSD	84.6		10.2	
	STATE	77.2		12.3	

STUDENT ATTENDANCE

Year	Count	%	
2013	PSD	7,130	0.3%
	STATE	529,358	0.5%
2014	PSD	9,188	0.4%
	STATE	525,714	0.5%
2015	PSD	8,947	0.4%
	STATE	625,971	0.6%

STUDENT COUNT REPORT – SEPTEMBER 2015

Elementary	Total
Brouillet	717
Carson	943
Edgerton	728
Firgrove	583
Fruitland	626
Hunt	634
Karshner	295
Maplewood	403
Meeker	449
Mt View	320
Northwood	375
Pope	566
Ridgecrest	573
Shaw Road	627
Spinning	305
Stewart	318
Sunrise	488
Waller Road	302
Wildwood	446
Woodland	696
Zeiger	685
Total Elementary	11079

Junior High	Total
Aylen	640
Ballou	840
Edgemont	450
Ferrucci	701
Glacier View	803
Kalles	885
Stahl	851
Total Junior High	5170

Senior High	Total
Emerald Ridge HS	1433
Puyallup HS	1707
Rogers HS	1734
Walker High School	128
Total Senior High	5002

STUDENT ENROLLMENT

Enrollment	October 2014 Student Count	May 2015 Student Count
PSD	21,640	21,759
STATE	1,075,107	1,070,756

* For additional detailed data, please visit the OSPI report card website at <http://reportcard.ospi.k12.wa.us>.